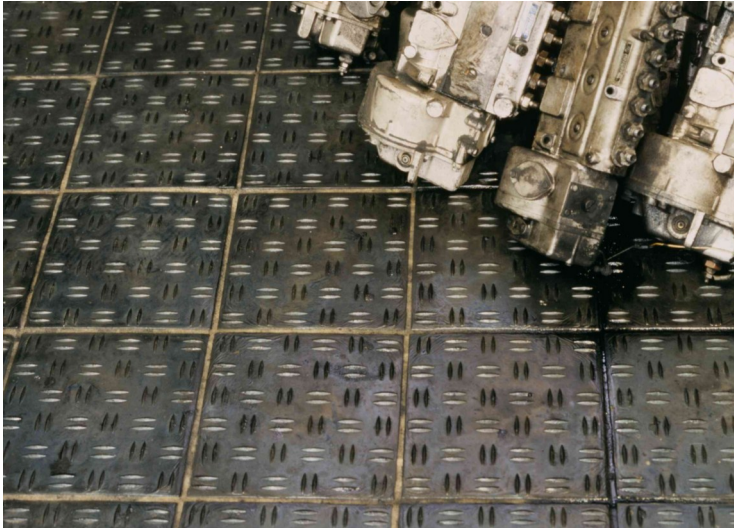


**Basalt** is a material with a lifespan exceeding not only centuries, but millennia. It is a natural material that gets a new appearance and shape by melting and casting. Its excellent physical properties can be used in various areas where the floor needs to be slip-resistant.

For this purpose, we manufacture several types of slip-resistant tile surface while keeping all the other properties of the basalt pavement arising from the parameters of this natural material.



Engine Factory (slip-resistant 250/250/30JR - Beata)



Hotel DUO Wellness Floor (slip-resistant 200/200/30JR - Diana)

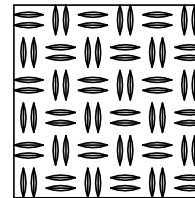
### Examples of Application:

- ◆ Places with hazardous leaks of fluids (water, oils, chemicals etc.) such as breweries, soda works, dairy works, bakeries, meat and fish works, pickling plants, car services, locksmith shops, press shops, canning factories, chemical warehouses and other
- ◆ Also suitable for the heaviest industrial operations and warehouses with wet technologies
- ◆ Floors in milking plants, dairies and cattle waiting hall
- ◆ Car washes, also for trucks
- ◆ Loading and unloading platforms
- ◆ Sloping walkways and sidewalks
- ◆ Garages, also under the ground, with the possibility of moving cars with nails in tyres
- ◆ Tiles for exterior stairs
- ◆ Tiles for fliers in sewer shafts

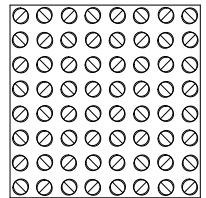
### Main Physical Properties:

- ◆ Very high compression strength (at least 3.5 tonnes/cm<sup>2</sup>)
- ◆ Excellent abrasion resistance (exceeding common materials several times)
- ◆ Chemical resistance (trouble-free application from pH 2 to pH 14)
- ◆ Absolute corrosion resistance of the natural material (properties are present along the entire cross-section)
- ◆ Moisture resistance and frost resistance
- ◆ Possibility of application under extreme conditions of up to 400°C
- ◆ Ecologically and hygienically harmless
- ◆ Long lifespan under the most difficult conditions

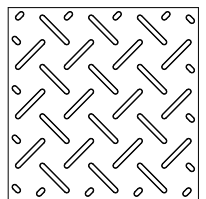
Beata (B)



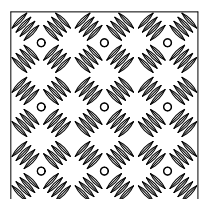
Cilka (C)



Diana (D)



Jitka



**Slip-resistance** – Classification of slip-resistant basalt tile patterns according to DIN 51130: “Beata” and “Cilka” – Group **R 11**  
“Diana” and “Jitka” – Group **R 10**