

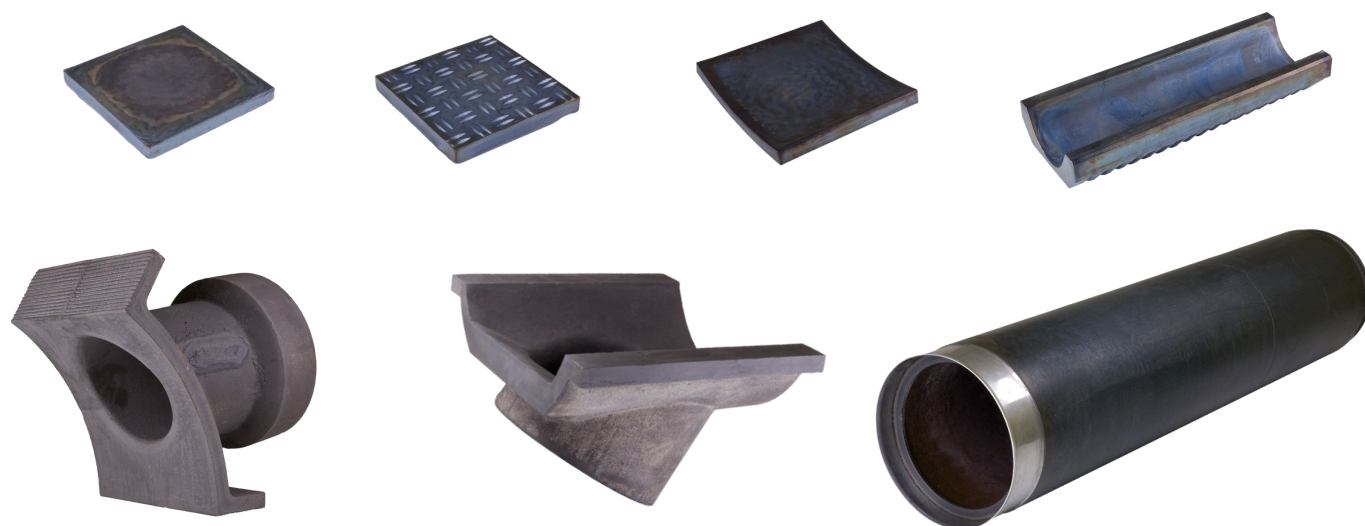
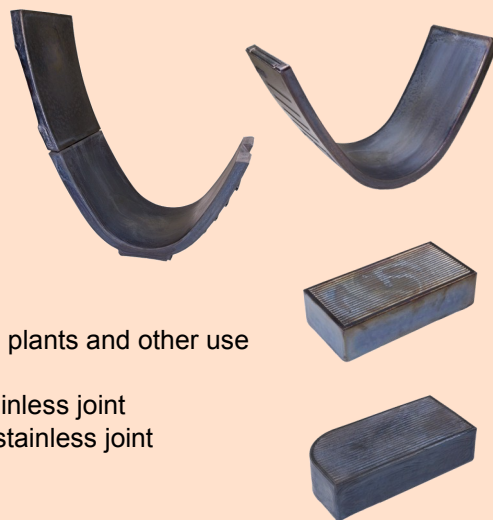
## Cast Basalt Substantially Extends Lifespan of Sewer Systems and Other Water Management Structures

The application of cast basalt products in sewer systems brings many advantages to the owners and managers of the sewage disposal systems. The end-use properties of this natural material **significantly exceed the lifespan of commonly used materials** and the comparison of prices of comparable products is also in favour of basalt. These are Czech products, cast from a Czech material.

The essential properties include very low hydraulic roughness, chemical resistance, absolute corrosion resistance and resistance to rodents as well as ecological cleanness and recyclability of this natural material. The comparison of the application of basalt in hydraulic transportation of hundreds of thousands of tonnes of highly abrasive materials such as cinder and ashes from heating plants and power stations to sludge beds with sixty years of experience shows that the lifespan of basalt in the sewer systems will be 200 years and more – even under extreme conditions.

### Cast Basalt Products for Water Management

- ◆ Bottom gutters for oval sewers in the 2/3 format
- ◆ Stamped bottom gutters with sidewalls for Prague Standard sewers
- ◆ Tubes, branch pipes and inlet heads for protecting sills
- ◆ Chemically resistant sewerage bricks, mosaic bricks and wedges
- ◆ Shape pieces for bottom ducts and shaft bottoms
- ◆ Inlet rings for sewer system gates
- ◆ Branch pipes for oval and circular walled sewers
- ◆ Tubes and radial shape pieces for concrete tube lining: 120°, 180°, 360°
- ◆ Slip-resistant elements for walkway parts of the sewers, wastewater treatment plants and other use
- ◆ Special shape pieces for wastewater treatment plants
- ◆ One-meter-long basalt heading tubes: DN 100–500, fitted with sealing and stainless joint
- ◆ Half-meter-long basalt tubes for IN-LINE DN 100–600, fitted with sealing and stainless joint
- ◆ Special shape pieces designed according to the customer's requirements



### Basalt products are attested both in the Czech Republic and abroad:

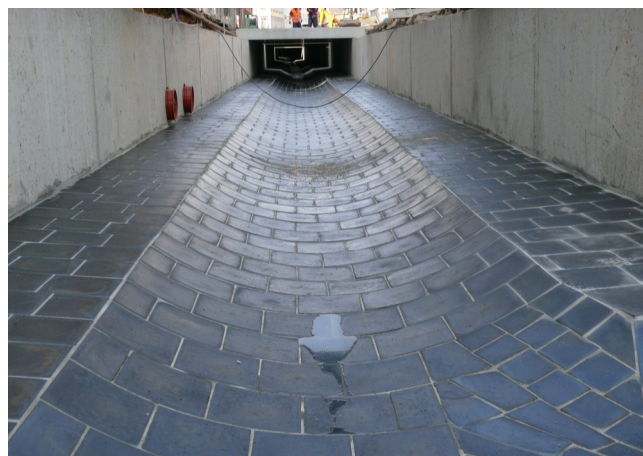
TZÚS PRAHA; IKT-INSTITUT FÜR UTERIRDISCHE INFRASTRUKTUR, GELSENKIRCHEN; INSTITUT FÜR WASSERBAU UND WASSERWIRT- SCHAFT – TECHNISCHE UNIVERSITÄT DARMSTADT; COMPAGNE NATIONALE DU RHONE HYDRAULICS AND MATERIALS TEST LABORATORY LYON.

**Cast basalt products for sewerage systems are rated by the aforementioned institutions as an EXTREMELY GOOD MATERIAL.**





# BASALT SEWER SYSTEMS – IMPLEMENTATION



**EUTIT s.r.o.**, EUCOR and Basalt Casting Plant, Stará Voda 196, 353 01 Mariánské Lázně, CZ

Tel.: +420 354 789 114, 184, 141; Fax.: +420 354 691 480; e-mail: [eutit@eutit.cz](mailto:eutit@eutit.cz); [www.eutit.cz](http://www.eutit.cz)

TRADITIONAL CZECH MANUFACTURER SINCE 1951