

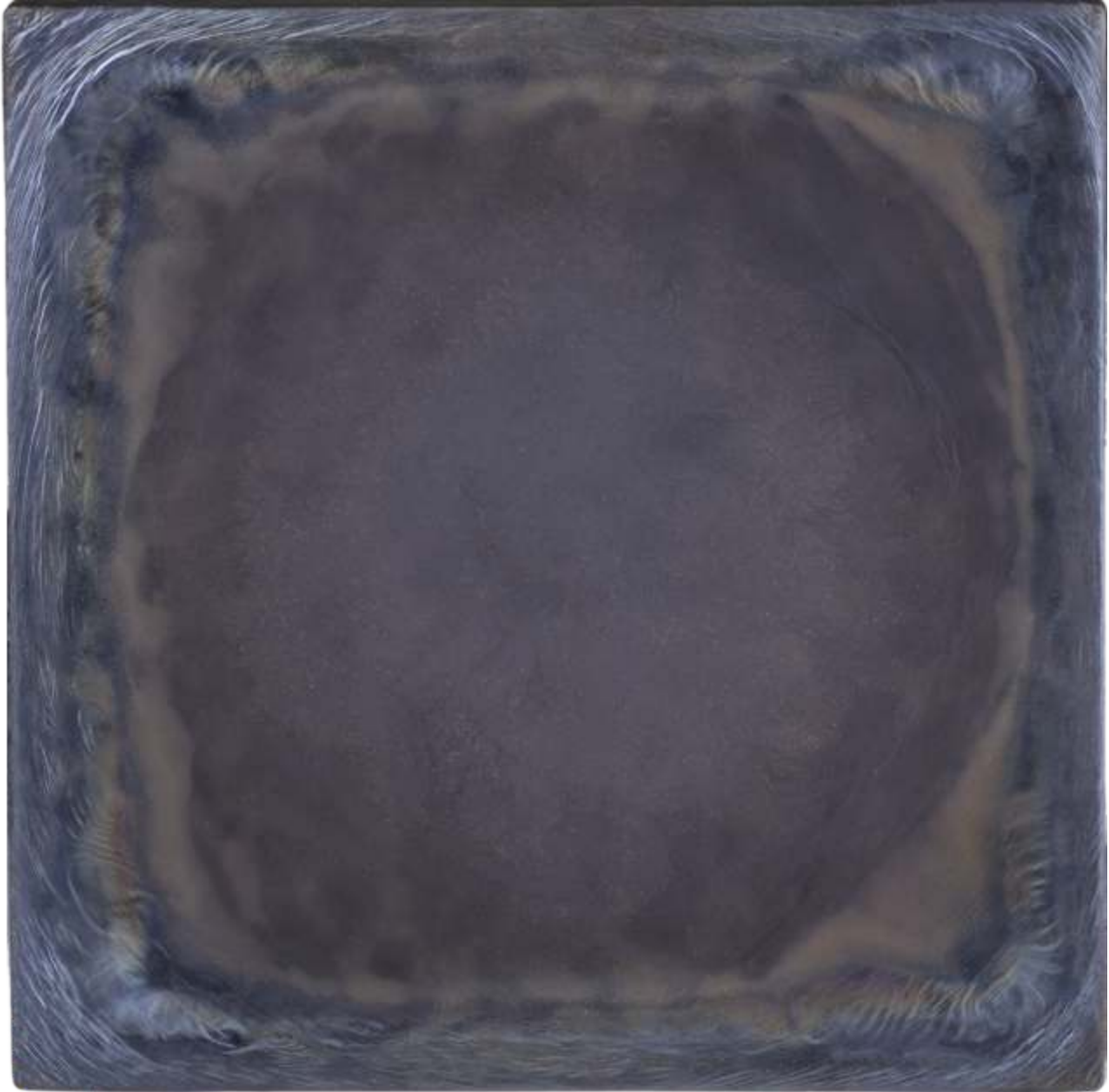


RESTAURANT, PUB, BEER HOUSE BASALT PAVEMENTS

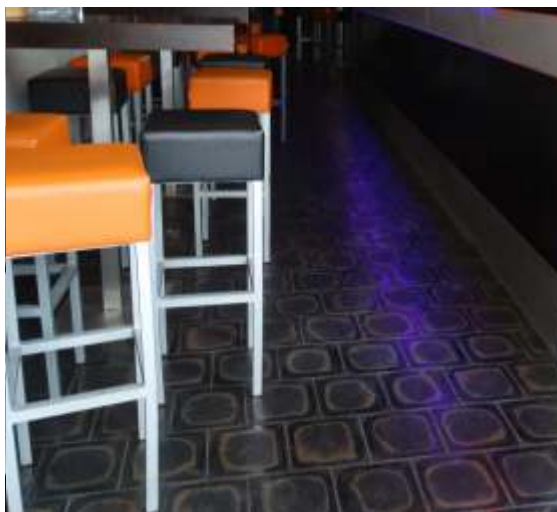
since 1951

An Ideal choice for heavy-duty floors in pubs, restaurants or bars.

You certainly would appreciate very good quality and durability of floor in your restaurant. Especially when made of natural material. This and as well as unmistakable appearance brings to you our basalt pavements! Our basalt tiles made by melting of natural stone – Basalt are one of the most resistant materials with very long lifetime which hardly have any competition.



**A tile made of cast basalt size 200/200 or 250/250 mm
Comes from molten basalt of temperature around 1300°C / 2372°F**





since 1951

REALIZATION SPECIAL SHAPED PIECES

Good choice for long life!

Excellent properties of millions years old volcanic stone are enchanted by melting and what more, to every single basalt tile is given randomly by cooling unique colour shade which makes each tile an original. Utilization of basalt pavement is very versatile and gives distinctive and original feeling to bars beer houses or stylish restaurants.



Anti-slipping tile
Cilka (C)



L-piece



Strip

