



## BREWERY FLOORS

Basalt – The ideal choice for looks and durability







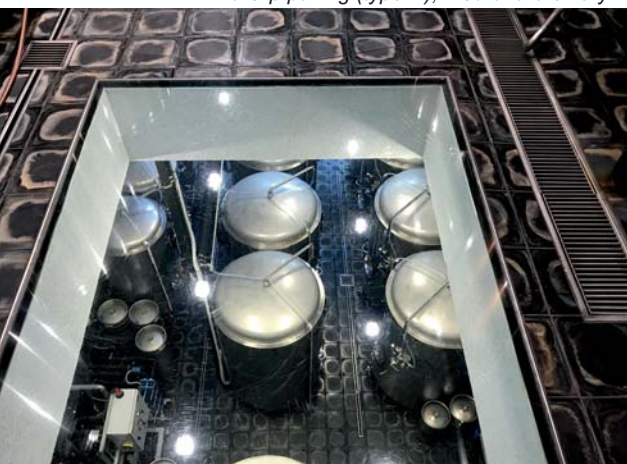
Hexagonal paving including L-pieces, Mladá Boleslav brewery



Smooth anti-slipping paving (type C), Cvikov brewery



Anti-slip paving (type D), Modrava brewery



Smooth paving 250x250 mm, Pec pod Sněžkou brewery

**BASALT TILES – A MILLION YEARS IN MAKING**  
Forged in the heart of volcanoes, basalt tiles combine a modern, contemporary look with unrivalled beauty and durability. Cast from one-million-year-old neo-volcanic rock, they offer a versatile solution for areas where a hard-wearing flooring is essential.

The world's largest producer of cast basalt, Eutit from Stará Voda in the Czech Republic has been producing basalt tiles for use in heavy industry, including the brewing sector, since 1951 and its products are now available directly or through our nominated global distributors.

Popular in the most upmarket of continental bars, restaurants, shops, offices and civic buildings, thanks to their remarkable individuality and unique properties they are also ideally suited for breweries.

Basalt flooring is as durable as the Earth itself, molten cast to achieve a uniform, crystalline structure to suit a vast variety of uses. As one of the toughest natural ceramic materials known to man, basalt offers unrivalled abrasion and chemical resistance, as well as non-porous surfaces that are hygienic and easy to clean, basalt provides a dramatic flooring solution that combines practicality with stylish aesthetics.

#### BREWERIES AND BASALT

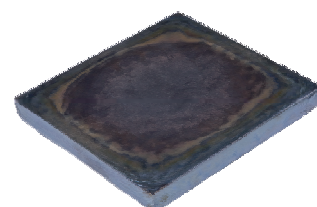
When you enter a brewhouse or lager cellar of Bohemian or Moravian breweries, chances are that you will be stepping on paving produced by Eutit. Our products provide the flooring of choice for craft brewers thanks to their unique appearance and features ideally suited for withstanding frequent cleaning with corrosive materials.



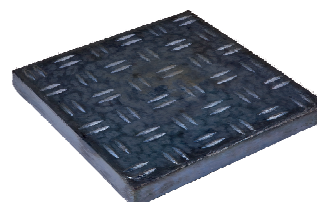
As an added bonus, just as each beer has its own individual qualities, so does each basalt floor. After casting, each basalt tile produced has its own unique finish, giving every installation a distinctive and highly desirable look.

#### RESTAURANTS

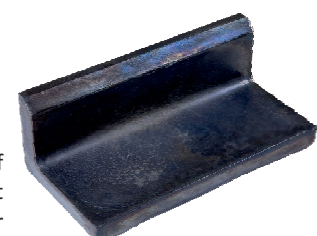
Clearly, the use of basalt is not confined to areas where the brewing takes place, their attractive contemporary look has also proved popular in bars where the beer is served. Its looks and practicality are also suitable for restaurants looking for an up-market, fashionable look.



Smooth paving



type B



L-piece (plinth)



## SPECIFICATIONS

For most brewery applications Eutit recommends either 200 x 200 mm or 250 x 250 mm smooth tiles to a thickness of either 22 mm or 30 mm. Anti-slip tiles are also available in the same sizes, with a thickness of 30 mm (type B,C or D).

Where the floor meets walls, L-pieces (plinths) with a radius in the corner are recommended for easy cleaning and maintenance. These are available in lengths of 200 and 250 mm, in different heights and thicknesses and bespoke pieces can be made to order.

## CUTTING AND INSTALLATION

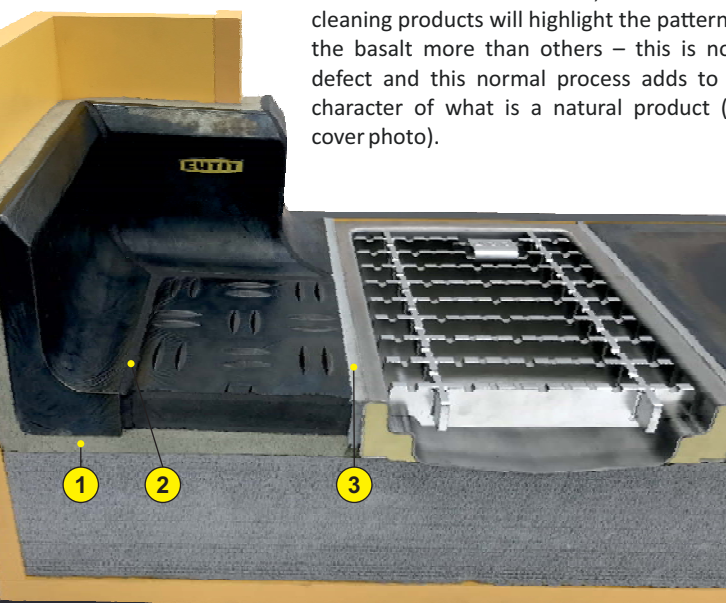
Basalt is a very hard material (point 8 on the Mohs Scale), so the use of a diamond blade, similar to those used for cutting granite, is recommended, together with intensive water cooling. At no point should the blade, heat up, ignite or melt.

While the tiles are precision cut, the full benefits of a basalt floor can only be achieved if fitted correctly and a suitable fixing is used. Eutit's Eufix range of adhesive products have been specially developed for such applications.

### The recommended products are as follows:

- 1** For installing basalt tiles to a concrete base, use the Eufix I mortar. Designed specifically for full-area bonding of paving with high load-bearing capacity it offers high adhesion for non-absorbent basalt. The mortar bed should be 5-30mm with the bed absorbing the thickness tolerance of the basalt  $[+/-2\text{mm}]$  to give an flat, even surface..
- 2** For jointing of basalt tiles using Eufix EP-JF1, a next generation epoxy chemically resistant grout. Freshly applied it can be washed with water and we recommend a minimum joint width of 5mm. It is important to ensure that the joints are filled at least to a height of 2/3 of the tile thickness.
- 3** For joints between stainless steel drainage components and basalt paving, we recommend using a permanently flexible, chemically resistant Eufix PU 40 polyurethane sealant.

Please note : The above recommendations are based on years of knowledge and experience. If the installation contractor uses inferior adhesive products during installation it could significantly impact the durability of the basalt floor which, when properly installed, should last for decades. Furthermore, certain chemical cleaning products will highlight the patterns in the basalt more than others – this is not a defect and this normal process adds to the character of what is a natural product (see cover photo).



Smooth paving 250x250 mm, Vlachovo Březí brewery

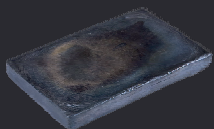


Smooth paving 250x250 mm, Vlachovo Březí brewery

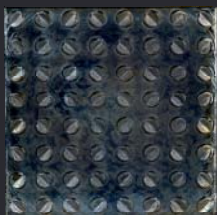


Hexagonal paving in lager cellar of Mladá Boleslav brewery





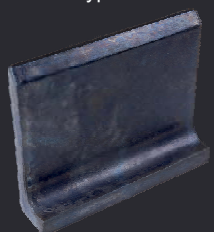
Smooth paving



type C



type D



L-piece (plinth)

## KEY BENEFITS OF BASALT

More resilient than traditional stone or ceramic flooring.  
Chemical, abrasion and impact resistant Scratch hardness  
of surface according to Mohs (ČSN EN 101) 8  
High compressive strength min. 300 až 450 Mpa  
Bulk density 2900 – 3000 kg.m<sup>3</sup>  
High temperature tolerance up to 400°C  
Attractive 'unique' appearance  
Hygienic and easy to clean

## EUFIX ADHESIVE SYSTEMS

Where less chemically aggressive conditions occur such as in restaurant, shops or bar floors we offer from our EUFIX range the flexible EUFIX F System for adhesive and grouting. Other adhesives available for special conditions can be supplied upon request.

## REFERENCES

Eutit brand paving has been installed in more than 250 breweries across Europe, including facilities in the Czech Republic, Poland and Germany as well as in the USA.

Some famous examples, large and small, include:

Pilsner Urquell, Czech Republic  
Sierra Nevada, USA  
Ládví Cobolis, Czech Republic  
Zlatá Kráva, Czech Republic  
Pyraser, Germany  
Lubrow, Poland



EUTIT s.r.o.  
No. 196  
353 01 Mariánské Lázně  
Czech Republic  
[www.eutit.cz](http://www.eutit.cz)

ISO 9001

